

# OPzV1500 VRLA STATIONARY BATTERY



## 1. Specification

DIN Size Tubular Plate

NOMINAL VOLTAGE		2 V		TERMINAL:mm 
NOMINAL CAPACITY		1500Ah/10HR		
DIMENSIONS	LENGTH	± 2 mm	340 mm (13.4 inches)	
	WIDTH	± 2 mm	211 mm (8.30 inches)	
	HEIGHT	± 3 mm	647 mm (25.5 inches)	
	TOTAL HEIGHT	± 5 mm	679 mm (26.7 inches)	
COMPLETE CELL WEIGHT		112kg (247lbs)		
Type of Electrolyte		Gel Type		
Housing Material		ABS Resin		

## 2. Constant current discharge Ratings—Amperes 25°C/77°F(Operating time to final voltage)

Final Voltage	30min	1hr	2hr	3hr	5hr	6hr	8hr	10hr	20hr	24hr	48hr	100hr
1.65	1305	862	565	441	304	246	199	175	90.1	74.4	39.2	19.8
1.70	1267	825	532	418	286	232	192	165	88.2	74.2	39.1	19.7
1.75	1200	787	504	396	271	222	183	157	85.5	74.0	39.0	19.5
1.80	1155	750	475	375	255	211	177	150	81.0	73.9	39.0	19.4
1.85	1087	712	451	354	244	201	166	141	76.5	70.5	38.8	19.3

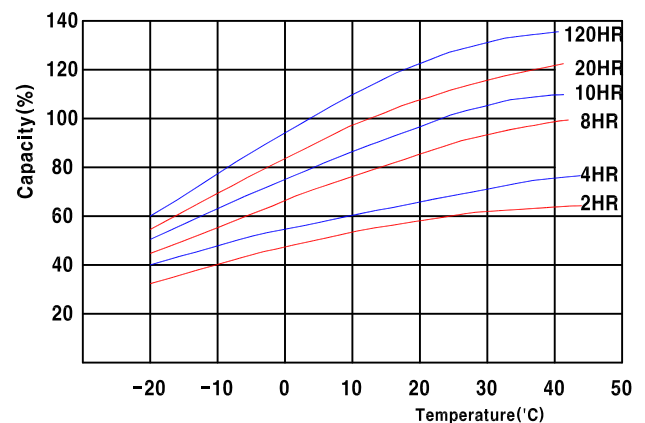
## 3. Constant power discharge Ratings—watts 25°C/77°F(Operating time to final voltage)

Final Voltage	30min	1hr	2hr	3hr	5hr	6hr	8hr	10hr	20hr	24hr	48hr	100hr
1.65	2737	1762	1263	885	571	547	451	337	169	153	102	52.2
1.70	2572	1710	1237	855	562	531	435	327	168	151	101	52.1
1.75	2352	1665	1204	826	555	514	420	315	166	150	101	52.0
1.80	2092	1560	1177	795	540	495	405	307	165	148	100	51.8
1.85	1815	1522	1116	754	516	471	388	291	156	142	100	51.7

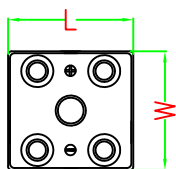
## 4. Characteristics

Float Life 25 °C(77 °F)	22 years	
Cycle Life 25 C/77 F	80% DOD: 1500 cycle 25% DOD: 5500 cycle	
Charging voltage 25 °C/77 F	Float use	2.22V~2.25V
	Cycle use	2.33V~2.37V
Max. Charging Current	300A 25°C/77°F	
Recharge time 25°C/77°F	Float use	>96hours
	Cycle use	24hours(50%DOD)or 48hours(100%DOD)
Self discharge 25°C/77°F	<0.08% per week	
Internal Resistance(25C)	0.24mΩ(approx)	
Short Circuit Current	8,085A 0.1Sec(25°C/77°F)	
Operation Temp. range	-20°C~+45°C(-4°F~+113°F)	

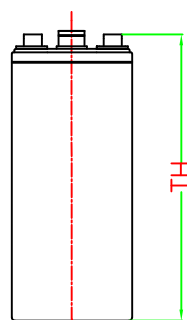
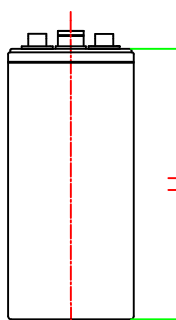
## 5. Relation Covers between Temp. and Capacity



## 6. Dimensions



Nos. of Terminal : 4pcs.



## 7. Discharge Curve

